

**handtmann**  
Ideas for the future.

# PET FOOD



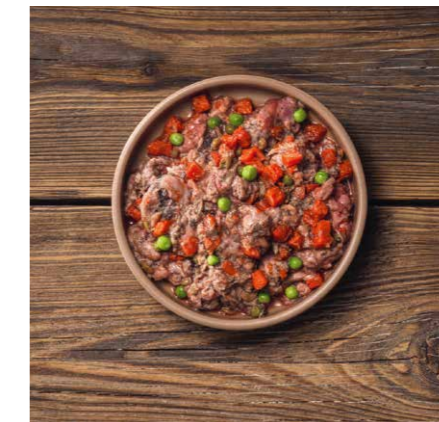


# Experienced and open-minded.

**WE REALIZE YOUR IDEAS IN THIS DYNAMIC MARKET TOGETHER WITH YOU.** With around 1,500 employees worldwide, a global service network, committed teams on site, and technology centers for your product tests and ideas. This is how we have managed to take the core technologies of filling and portioning, as well as upstream and downstream processes, to a technical premium standard. We offer both modular stand-alone machines and networked line solutions as well as digital services for state-of-the-art production management.

## WE PUT YOUR PRODUCT IDEAS INTO SHAPE

Whether classic **wet, raw, and dry pet food, or snack products such as sausages, bars, nuggets, sticks, or other special shapes:** All of these applications can be produced cost-effectively and to a high-quality standard with our solutions.



### WET PET FOOD

Chunks in gravy | Pâté | Raw pet food



### SNACKS & TREATS

Sticks | Chew strips | Sausages | Special shapes

**THE NUMBER OF PETS** has grown steadily in recent years. Consequently, the demand for animal feed is also on the rise. Meanwhile, pet owners are placing increasing importance on a diet that supports their animals' health and well-being. The market today therefore has a wide range of products on offer, and new trends are continuously popping up. For you, as a producer of high-quality pet food, it is therefore essential to produce cost-effectively whilst relying on flexible, automated processes. We are here to support you with our solutions!



# Flexible. Modular. Networked.

Whether well-established products or new concepts for tapping into new markets, and regardless of whether these are filled, portioned, dosed, formed, co-extruded, linked, or clipped: With Handtmann, the potential for pet food production knows virtually no limits.

We are particularly strong in providing flexible system solutions and fostering a global, collaborative, and synergistic approach both in the market and in our interactions with customers.

We bring together technologies, processes, products, and people to build powerful, overall solutions that deliver real added value.

## Product preparation

- > Grinding
- > Mixing
- > Emulsifying



**YOU BENEFIT FROM MAXIMUM EFFICIENCY**, excellent quality, and state-of-the-art technology that will propel your production processes to the next level. The centerpiece of all modular production concepts is the vacuum filling machine featuring the proven Handtmann vane cell feed system. It ensures exceptional portioning accuracy and extraordinarily gentle transport of the filling product.

## Product processing

- > Filling and portioning
- > Inline grinding and separating
- > Linking
- > Sausage separation
- > Forming and cutting

- > Dosing
- > Co-extruding
- > Tying
- > Dividing
- > Declipping
- > Weight regulation



## Handling

- > Product handling
- > Container handling





INDUSTRIAL PRODUCERS

# Premium. Smart. Connective.

Shortage of skilled workers, rising cost pressure, downtimes, and faults: With our reliable, smart machines, we offer you an efficient solution to overcome these challenges.

Our processing solutions are modular and energy-efficient, while at the same time they serve as reliable and intelligent control centers that reliably and efficiently oversee complex industrial processes.



## We are experts for:

- > Universal processing lines that turn meat and by-products into wet and dry pet food, or treats
- > Modular mixing and emulsifying technology for wet pet food such as, for example, chunks in gravy, pâté, or gently cooked pet food
- > Processing and portioning raw pet food, including coordinated interfaces to packaging machines such as thermo-forming machines
- > Flexible dosing and filling lines for challenging product consistencies
- > Accurate-to-the-gram forming of cold-extruded treats and snacks such as chew strips, sticks, and special shapes
- > Industrial production of clipped sausages (wet/raw pet food) and snack sausages (treats)

## Your benefit:

- > High weight accuracy for minimized give away, resulting in cost cuttings
- > Maximum level of food safety, supported by seamless documentation and exemplary hygiene
- > Efficient overall process for reduction of personnel and energy costs
- > Excellent service to keep downtimes to a minimum
- > Various digitalization solutions for production planning and optimization, cloud connection, and predictive maintenance included



ARTISAN SMALL-SCALE PRODUCERS

# Flexible. Pioneering. Excellent.

In a rapidly changing market, flexibility is key. Our adaptable solutions will put you in a position to respond quickly and efficiently to new requirements and challenges in production.

In addition, our machines significantly simplify manual, time-consuming tasks to boost your productivity. So you always stay one step ahead.



## We are experts for:

- > Modular mixing and emulsifying technology for the processing of meat, by-products, and other raw materials
- > Filling and dosing wet pet food into diverse packaging formats, such as cans, jars, and trays
- > Portioning and clipping wet and raw pet food
- > Flexible systems for the forming and cutting of treats and snacks, such as chew strips, sticks, and special shapes
- > Accurate-to-the-gram portioning and linking of snack sausage as treats



## Your benefit:

- > Gentle portioning for exemplary product quality and appearance
- > Maximum flexibility for the production of a wide range of products
- > Filling accurate to the gram
- > Intuitive and ergonomic operation
- > Fast and easy cleaning



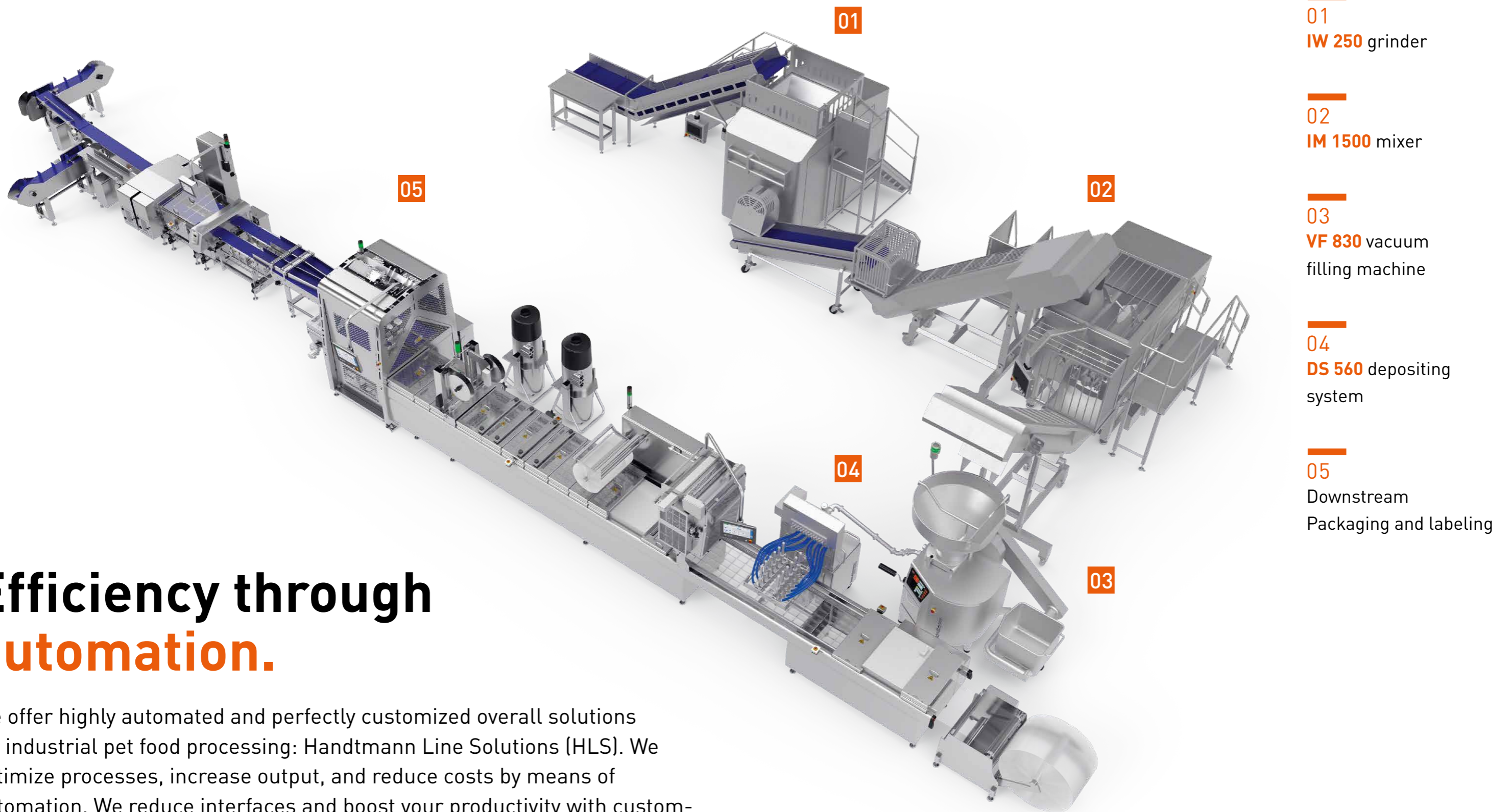
# Handtmann Line Solutions.

Are you looking for an integrated solution for your production that satisfies your individual requirements to perfection? Then let's get down and plan your project together! Benefit from integrated production lines – from design to implementation – provided by **HANDTMANN LINE SOLUTIONS.**

**HANDTMANN CUSTOMIZED SOLUTIONS** Your specific needs are what motivates us! The response to evolving customer needs and market demands is flexibility! Become part of our global multidisciplinary project team with your ideas. Together with you, we develop customized solutions for your production process – from product preparation to packaging. Intelligent solutions of premium quality.

# Efficiency through automation.

We offer highly automated and perfectly customized overall solutions for industrial pet food processing: Handtmann Line Solutions (HLS). We optimize processes, increase output, and reduce costs by means of automation. We reduce interfaces and boost your productivity with custom-designed line solutions, powerful components, and carefully selected technology partners. We are your reliable solution partner with line and process expertise.



Line example for gently cooked wet pet food



## Your benefit

- > 4,000 square meters of space and equipment to put your product ideas into practice
- > EU approval for foodstuff in accordance with the latest food legislation regulations
- > Mapping of complete production processes, from recipe to packaging
- > Handtmann FoodAnalytics Lab providing the measurement technology to support your product tests
- > Handtmann expert team with know-how and experience



## First-class service for first-class machines

**OUR GLOBAL CUSTOMER SERVICE** is always there for you and supports you in maintaining the intrinsic value of your Handtmann machines. Our specially developed service concept ensures that you get the service you need at the time you need it.

- > On-site support by service technicians
- > Telephone consultancy by specialists
- > Commissioning with briefing
- > Maintenance and service by professionally trained service technicians with many years of Handtmann experience
- > Full service contract

# Room for your ideas and their implementation.

Changing consumer behavior calls for products that meet these needs and the right machinery to produce them. We support you in finding the right solutions. Whether you are looking for new product ideas, special applications, or optimization of existing production processes: Test your options at our technology centers and benefit from optimal results thanks to our experienced and highly qualified specialists.

## Our service for your products

**OUR HIGH-TECH MACHINE SOLUTIONS** are put efficiently to work in your production and meet your high performance demands and quality standards twenty-four hours a day. Our proactive maintenance service and professional technical customer service make sure that it stays that way.



**WE ARE ALWAYS GLAD TO BE OF HELP.** In case of questions, an unexpected fault, or for scheduled maintenance work: our service team is at your side. Over the telephone, remotely, or in person at your site.

**PHONE:**  
+49 7351 45-0

**E-MAIL:**  
info.processing@handtmann.de

# Handtmann = added value for everyone.

We offer additional services perfectly matched to our excellent technology to create added value for you. This way, you remain flexible and can quickly respond to evolving market trends and your customers' demands.

## HANDTMANN CUSTOMIZED SOLUTIONS AND HANDTMANN LINE SOLUTIONS

Perfectly customized solutions tailored to specific production processes

## HANDTMANN DIGITAL SOLUTIONS

Smart digital solutions for securing economic production

## REMANUFACTURED MACHINES

Completely dismantled and professionally reconditioned

**FINANCIAL SERVICES** Flexible financing options at excellent conditions

**SERVICE SUPPORT** Global service and partner network, twenty-four hours a day

**CONSUMABLES** Handtmann cutting sets and strings for enhanced product quality, increased production capacity, reduced costs per unit

**TECHNOLOGY CENTERS** Room for your ideas – trials, testing, optimization

# 360°



# Remanufactured. Good as new.

## FACTORY REMANUFACTURING WITH ORIGINAL SPARE PARTS AND MANUFACTURER WARRANTY.

You can't ask for more. Because the professionally conducted overhaul of used Handtmann machines in the company's own second-hand machine center reliably guarantees maximum quality standards. For continued first-class product quality, portioning accuracy, and performance.



- > Complete dismantling and thorough full cleaning of the machines
- > Preventive replacement of important functional components
- > Complete replacement of all worn parts
- > Installation of original Handtmann spare parts
- > Final inspection by the quality inspection system
- > 6-month manufacturer's warranty included

**THE OUTCOME ARE FACTORY REMANUFACTURED ORIGINALS OF LEGENDARY HANDTMANN QUALITY.**

# Food Processing. Simply Smart.

**THE FOOD INDUSTRY CALLS FOR THE HIGHEST QUALITY AMID LOW COSTS, FLUCTUATING DEMAND, AND COMPLEX WORKFORCE PLANNING.**

In addition to high-performance machinery, transparent workflows, and reliable processes are paramount. With its digital solutions,

ranging from HCU software to cloud applications, Handtmann delivers smart tools to help you efficiently control and optimize your production. Benefit from greater transparency and productivity. Take the first steps toward a digital future with Handtmann Digital Solutions.

**HMC**  
Cockpit

**HDI**  
Data Interface

**HCU**  
Communication Unit

### UTILITY

**HRS** Handtmann Remote Support

**HLC** Handtmann Line Control

**HPI** Handtmann Process Indicator

**IFC** Intelligent Filler Clipper Interface

### SETTINGS

**HMF** Handtmann Monitoring Function

**HFM** Handtmann Function Module

**HPV** Handtmann Product Visualization

**MSA** Machine Setup Assistant

**HMC**

Connecting Handtmann vacuum filling machines and the Handtmann Cloud

**HDI**

Featuring standardized interfaces for easy communication with data processing systems

**HCU**

Central control unit for data monitoring, control, analysis, and documentation in real time

**HRS**

Requesting remote support with the click of a button

**HLC**

Status monitoring in real time and automatic program change for the line via the control unit of the vacuum filling machine

**HPI**

Determining the consistency of individual portion weights without an additional weighing system

**IFC**

Optimum synchronization of vacuum filling machine and clipper for increased output and easier operation

**HMF**

Indicating parameters outside the permissible range during production

**HFM**

Facilitating easy upgrade of many software functions

**HPV**

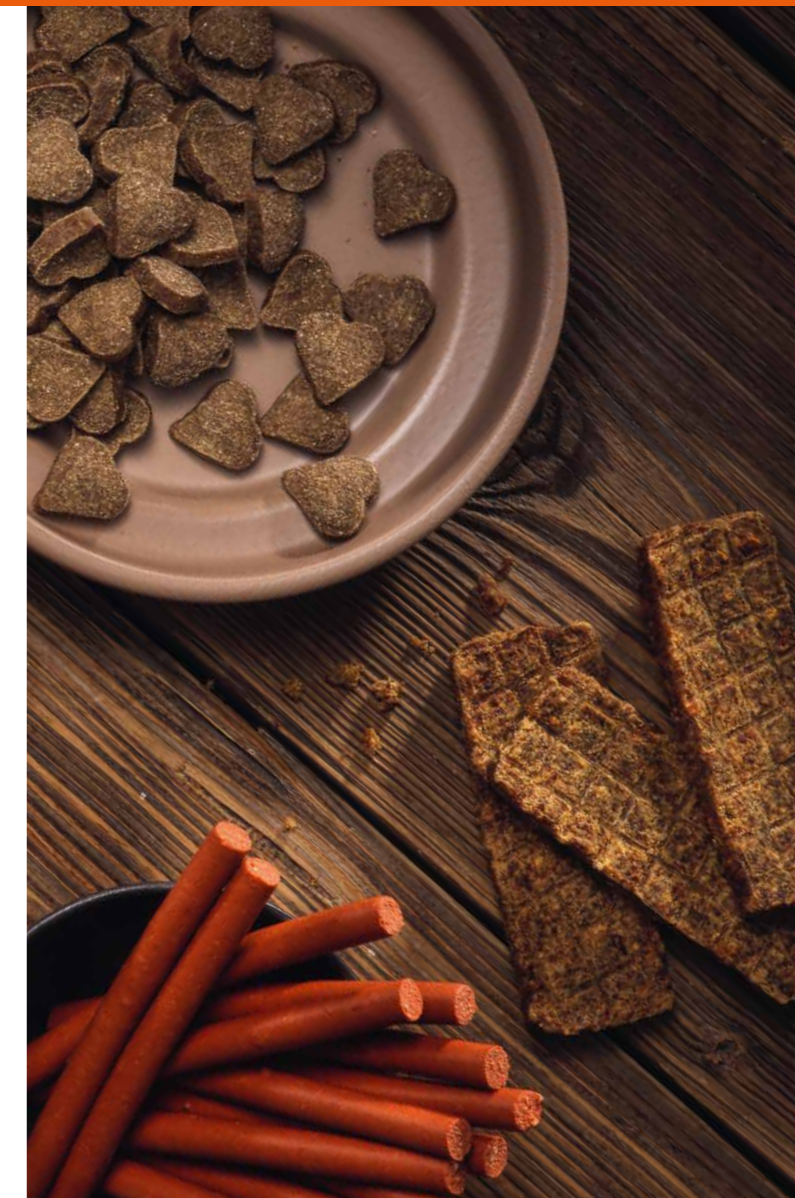
Simplifying product setup by visualizing the product shape on the machine control system

**MSA**

Automatically proposing equipment options and machine parameter settings



**CHRISTIAN KNOTT**



## Happy customers – the best proof of our excellent technology

### QUALITY AND RELIABLE PARTNERS FOR DECADES OF LASTING SUCCESS

Knott has been successfully producing all-natural, high-quality pet food since 1984 with focus on animal welfare. This concept has helped the company grow to a production area of around 1,500 square meters today with state-of-the-art machinery, including Handtmann technology. Particular importance is attached to cleanliness and hygiene through frequent cleaning and disinfection.

With Handtmann production technology and service, the company sees the aspects of premium quality, sustainability, versatility, best hygienic conditions, and first-class product quality met to its complete satisfaction. "In Handtmann, we have found a reliable partner, who has never let us down," Christian Knott says.

#### CHRISTIAN KNOTT

Owner of Knott Tiernahrung, Straubing, Germany



Scan QR code to watch the video



**handtmann**  
*Ideas for the future.*

**ALBERT HANDTMANN MASCHINENFABRIK  
GMBH & CO. KG**

Hubertus-Liebrecht-Str. 10-12  
88400 Biberach / Riss, Germany

**TEL.** +49 7351 45-0  
**FAX** +49 7351 45-1501

info.processing@handtmann.de  
[www.handtmann.com/processing](http://www.handtmann.com/processing)